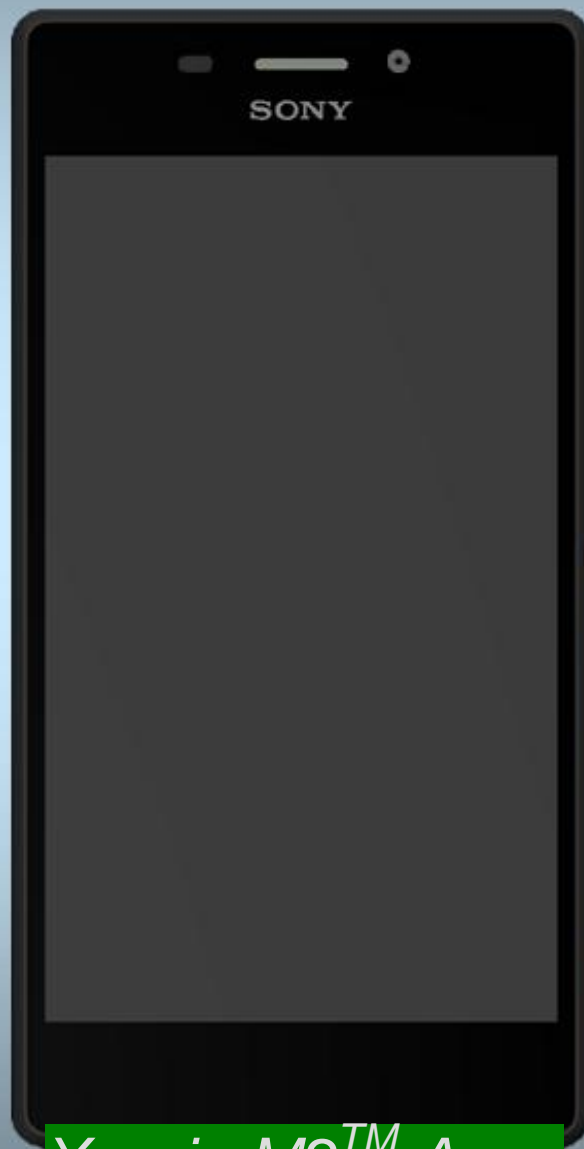


Component Replacement

- electrical -



Xperia M2™ Aqua
D2403, D2406

CONTENTS

1 Replaceable Components 3

2 Component Placing..... 5

3 Additional Repair info 6

4 Revision History 10

For general information about electrical repair related issues, refer to 1220-1336: Generic Repair Manual - electrical

Test after electrical replacement: refer to 1273-1772 Mechanical Test Instruction

Do not remove shield can lids (Heat pasta are added and RF performance will be damaged)

1 Replaceable Components

EXPLANATION OF ABBREVIATIONS USED IN THE COLUMN 'COMMENTS' BELOW

COMPONENT LOCATION

P = Primary side

S = Secondary side

REPAIR METHOD

HA = Hot Air (removal & mounting)

ST = Soldering Tool (removal & mounting)

HA/ST = Hot Air for removal - Soldering Tool for mounting

BGA = BGA Station

BH = Bottom Heater

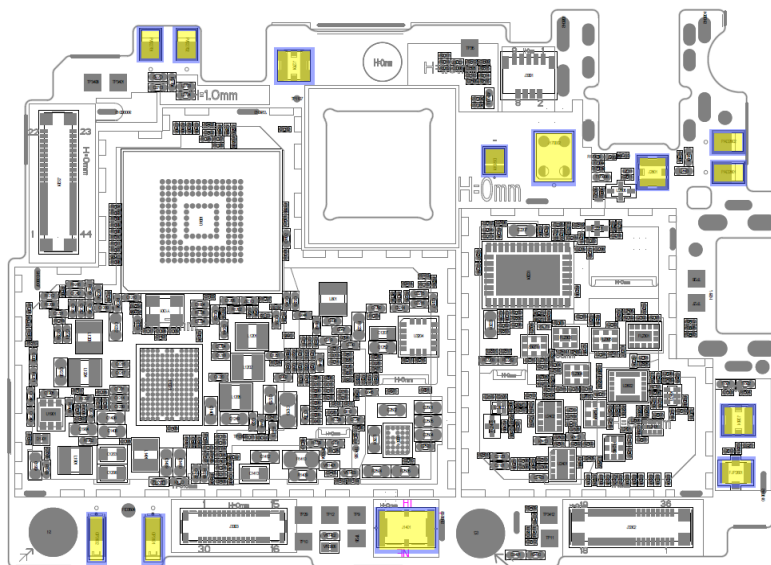
ADDITIONAL INFORMATION

⇒1 (2,3,4, etc.) = Proceed to 'Additional Repair Info' for further instructions in the indicated section(s).

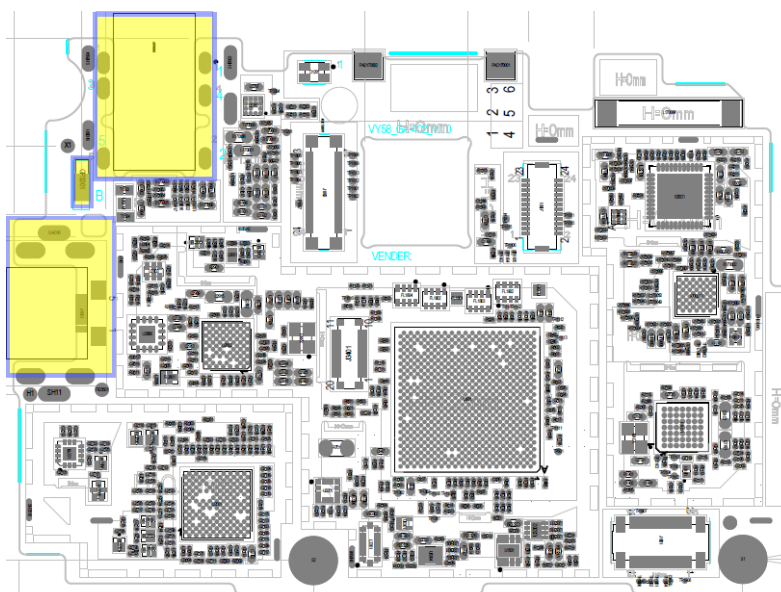
Position	Component	Part no.	Comments
DS1301	LED	1770000098W	P HA+BH ⇨1
FJP2601	COAX CONN	2335000008W	P HA+BH ⇨2
GP3101	SPR CONN	2313000105W	P HA+BH ⇨3
GP3102	SPR CONN	2313000105W	P HA+BH ⇨3
GP3301	SPR CONN	2313000109W	S HA+BH ⇨4
J1401	BATT CONN	2303000078W	P HA+BH ⇨5
J1501	USB CONN	2336000077W	S HA+BH or BGA ⇨6
J170001	AUDIOJACK	2311000080W	S HA+BH/ST ⇨7
J170002	MEMS MIC	2220000025W	P HA+BH ⇨8
J2601	RF SWITCH	2302000020W	P HA+BH ⇨9
J2701	RF SWITCH	2302000020W	P HA+BH ⇨10
J2801	RF SWITCH	2302000020W	P HA+BH ⇨11
PAD2702	SPR CONN	2313000099W	P HA+BH ⇨12
PAD2801	SPR CONN	2313000099W	P HA+BH ⇨13
PAD2802	SPR CONN	2313000099W	P HA+BH ⇨13

2 Component Placing

To access the Component Placing document, double-click the icon below.
Applicable for on-screen viewing only – icon not shown on hard-copies.



Primary side



Secondary side

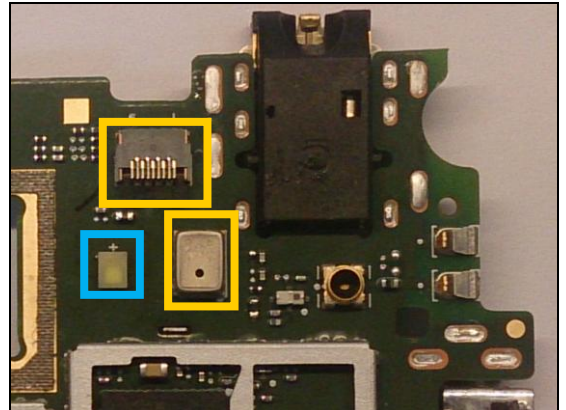
3 Additional Repair info

1

DS1301

Replace if Flash LED not working

Protect the BtB connector and Mic with capton tape!

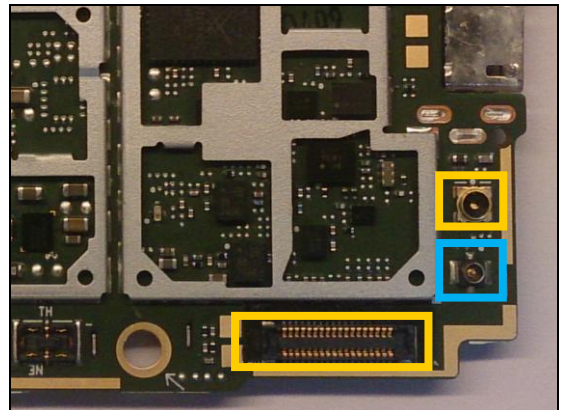


2

FJP2601

Replace if mechanical damaged. (No or bad network, main antenna)

Protect the BtB and RF connectors with capton tape!

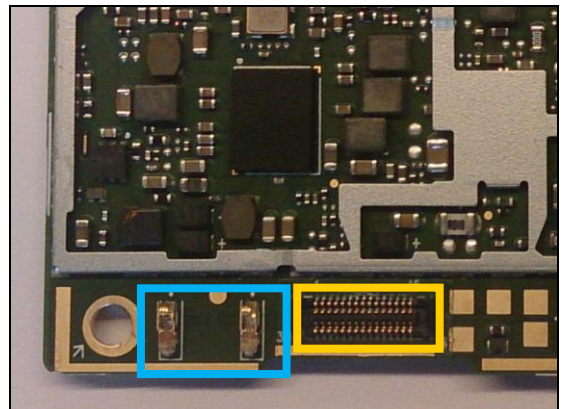


3

GP3101, GP3102

Replace if mechanical damaged. (No or bad NFC)

Protect the BtB connector with capton tape!

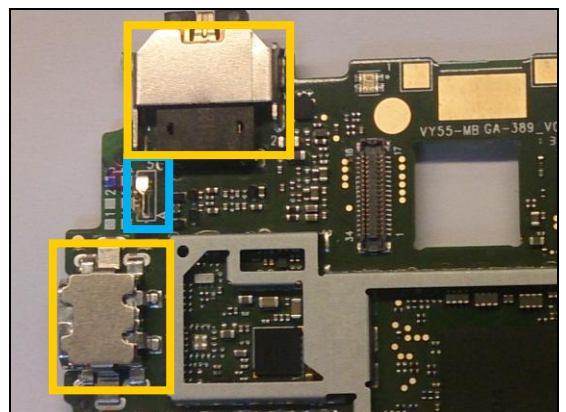


4

GP3301

Replace if mechanical damaged (Grounding pin)

Protect the Audio jack and USB connectors with capton tape!

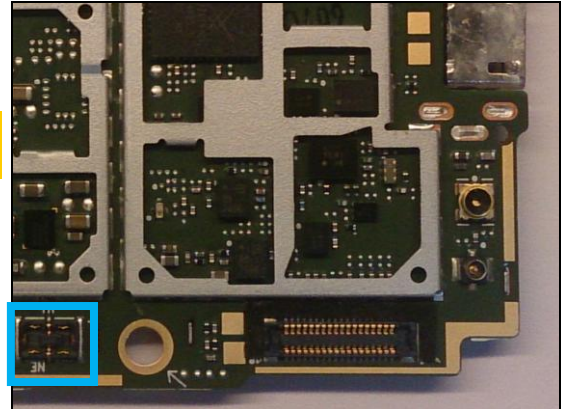


Repair Actions: Additional Repair Info

5

J1401

Replace if mechanical damaged (Phone dead or power off)

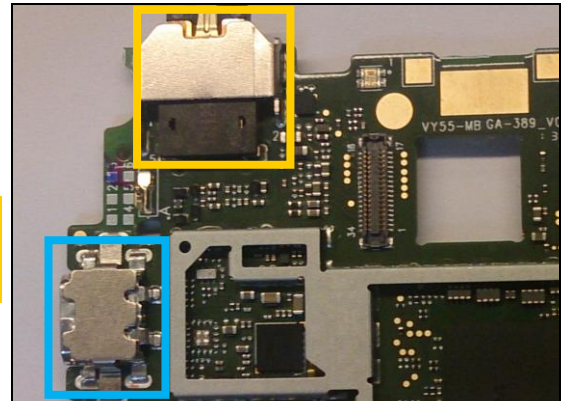


6

J1501

Replace if mechanical damaged (USB charger or data transfer not working)

Protect the Audio jack connector with capton tape!

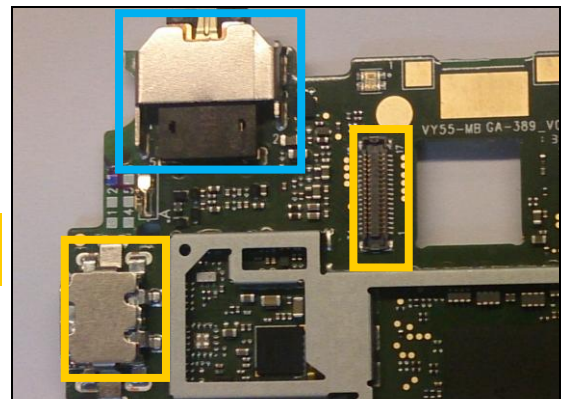


7

J170001

Replace if no audio from headset.

Protect the BtB and USB connectors with capton tape!



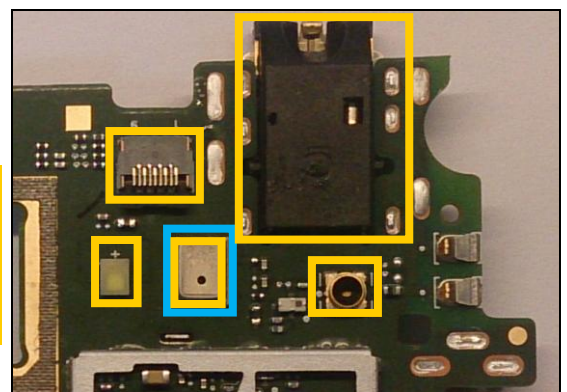
8

J170002

Replace if no audio from secondary mic

When replacing protect secondary mic with capton tape!

Protect the LED, BtB, RF and Audio jack connectors with capton tape!



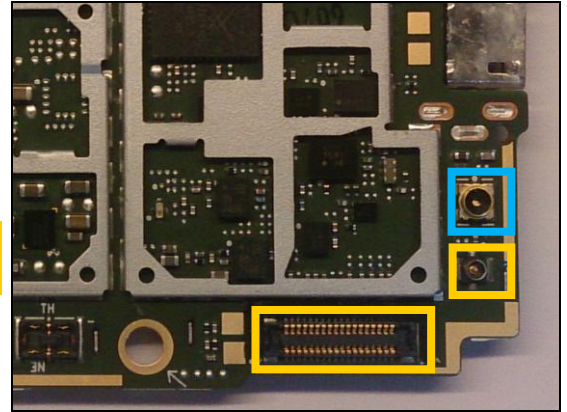
Repair Actions: Additional Repair Info

9

J2601

Replace if open circuit 1-2 (Bad network, main antenna)

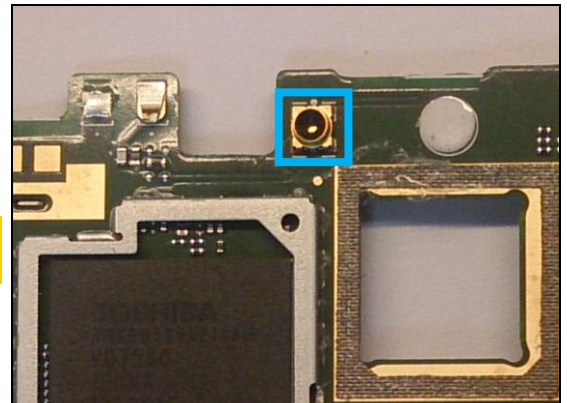
Protect the coax and BtB connectors with capton tape!



10

J2701

Replace if open circuit 1-2 (Bad network, diversity Rx antenna)

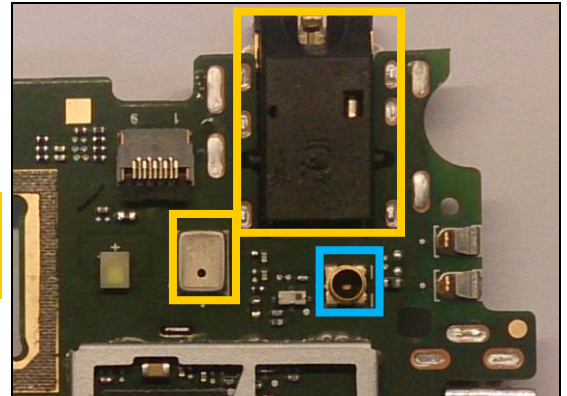


11

J2801

Replace if open circuit 1-2 (No or bad GPS)

Protect the mic and Audio jack connector with capton tape!

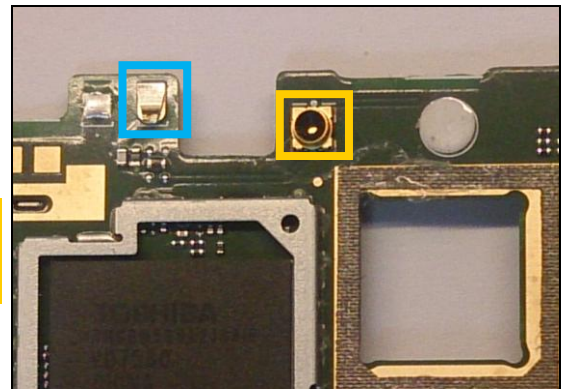


12

PAD2702

Replace if mechanical damaged (Bad network, diversity Rx antenna)

Protect the RF connector with capton tape!

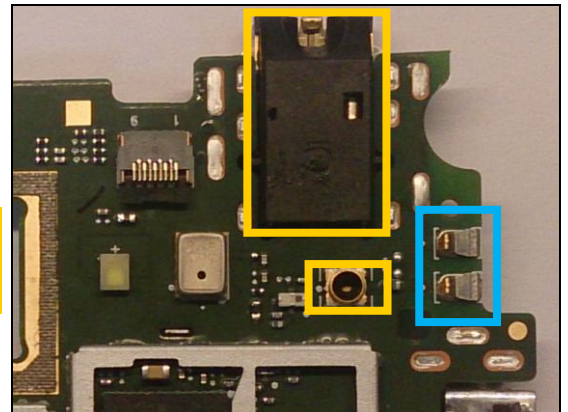


Repair Actions: Additional Repair Info

13

PAD2801, PAD2802

Replace if mechanical damaged (No or bad GPS)
Protect the RF and Audio jack connectors with capton tape!



4 Revision History

Rev.	Date	Changes / Comments
1	2014-08-20	Initial release